

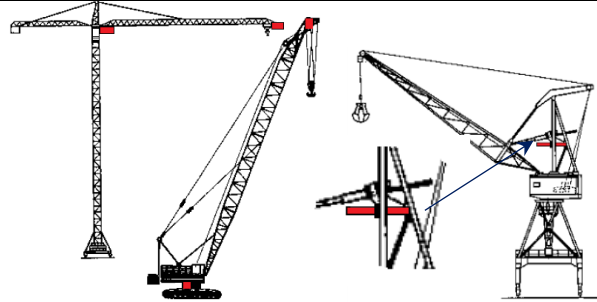


Dyna Shock System

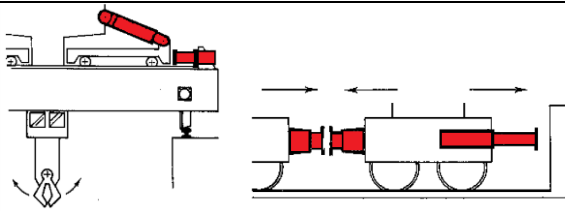
APPLICATIONS LEVAGE & MANUTENTION
LIFTING & HANDLING APPLICATIONS
HEBEN & HANDLUNG ANWENDUNGEN



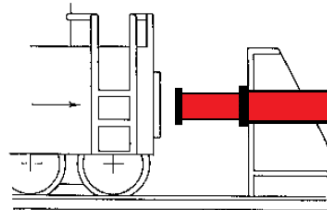
PONT ROULANT - CRANE



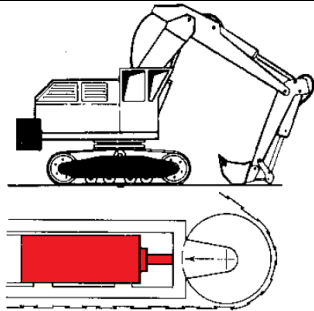
GRUE - HOIST



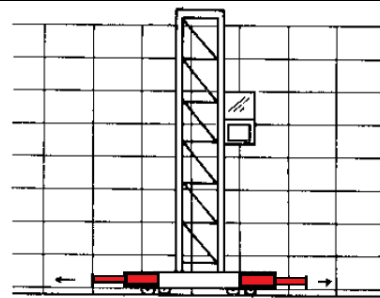
PROTECTION DE CAISSON - BOGIES
PROTECTION FOR ROLLING STOCK



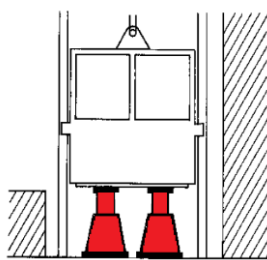
HEURTOIR DE SECURITE - TRACK STOP



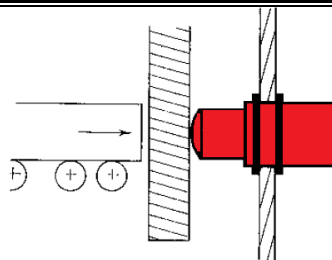
PELLE HYDRAULIQUE - EXCAVATOR



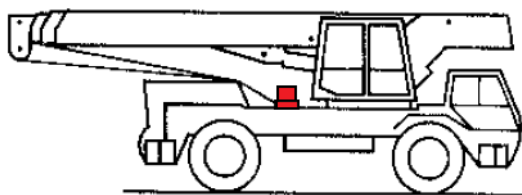
TRANSTOCKEUR - TRANSTOCKER



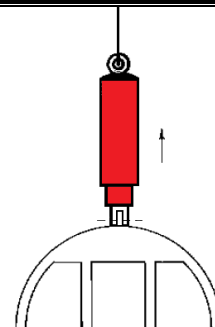
ASCENSEUR - LIFT



HEURTOIR - BUMPER



GRUE MOBILE SUR CAMION - MOBILE CRAN ON TRUCK



LEVAGE - LIFT UP